The image is a composite of three scenes. The top scene shows a woman in silhouette on a city street at night, holding a mobile phone to her ear. The middle scene is a close-up of a man's intense eyes peering through multiple horizontal strips of yellow caution tape that reads 'CAUTION'. The bottom scene shows a woman with a tiara looking out from a wire cage in a room with blue lighting and posters on the wall.

NOT ALL HITWOMEN WEAR HEELS

SHABU

INSPIRED BY
TRUE EVENTS

STORY BREAKDOWN



FAMILY · HONOR · TRUTH · CONSEQUENCES · FEMALE EMPOWERMENT

Belief systems clash, leading to an “evolve or die” attitude. Adaptation to change is a continued theme, as it is in life. Survival of the fittest is to find amity in the truth, and overcome.

PLOT

Aimee, a young and determined woman, lives in a Filipino shantytown with her husband, Jeff Ryan, a retired American soldier, and their two young children. Unbeknownst to her, Jeff supports their family by working as a contract killer, taking out drug dealers on behalf of the government. But when a hit comes in that requires a woman's touch, Jeff turns to the one woman he trusts - his wife, Aimee. Torn between loyalty to her husband and her moral compass, she reluctantly accepts the job and successfully completes it. But this is just the beginning of her journey as she becomes embroiled in a dangerous web of lies, betrayal, and murder. She carries out an unsanctioned hit, which sets off a chain of events that leads to Jeff's death, and her children being kidnapped. She is forced to embrace her new identity as a killer, and will stop at nothing to avenge her husband's death and rescue her children. She sets out on a perilous mission, navigating through a maze of deceit and violence, determined to take down the criminal organization that threatens her family.

SUBPLOT

Bayani and Jeff served together in the war, and when Jeff moved to the Philippines for a fresh start, Bayani, now a high-ranking police officer, offered him work as a hitman, assassinating drug dealers. Jeff met Aimee, started a family, but kept his dangerous profession a secret from her. But when a job comes up that requires Aimee's direct involvement, her life takes a dangerous turn. Empowered by her first kill, Aimee decides to take matters into her own hands, but when she targets a drug dealer who is secretly working for Bayani, chaos ensues. Bayani, enraged by her actions, sets her up for another hit, but with a gun that has no bullets. While Aimee is away on this mission, the gang Bayani is protecting kills her husband and kidnaps her children. Bayani never imagined that his alliance with criminals would lead to the death of his friend and the kidnapping of his children, but in the end, he pays the ultimate price for his betrayal.

CHARACTER ARCS

AIMEE CHARACTER ARC

Aimee begins as a timid mother, afraid of the world, but ends with no fear of the world, and a fierce determination to protect her children at all costs.

BAYANI CHARACTER ARC

Starts as a corrupt cop, then regrets that his corruption led to the death of his best friend.

STONE

SHABU



THE STYLE OF THE MOVIE WILL BE SLIGHTLY OVER EXPOSED WITH STRONG SATURATION.



Cinematically shot in the same style as **CRANK** meets **MAN ON FIRE**, with the cinematic edge of **MR. ROBOT**, and the color psychology of **PUNCH DRUNK LOVE**.

Featuring a diverse **INTERNATIONAL CAST** representing the **USA, MEXICO, SPAIN, ASIA, RUSSIA, TURKEY, AND MORE.**



PITCH

SHABU



LOGLINE

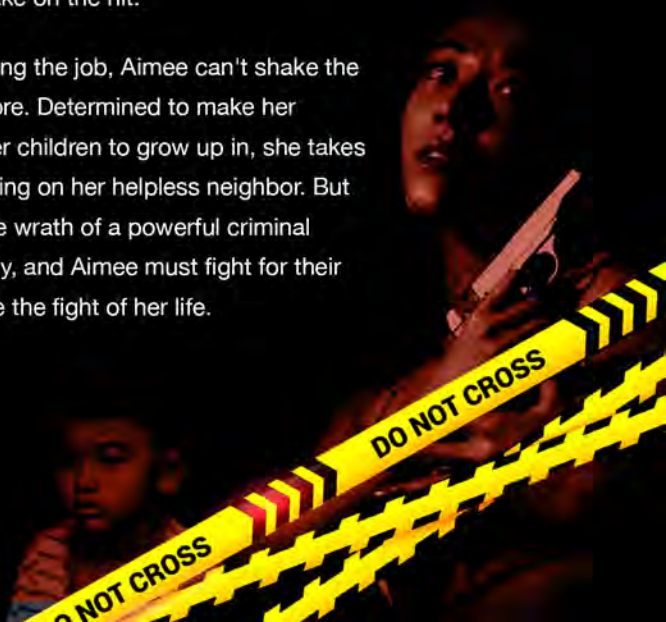
A young mother is drawn into a deadly game of cat and mouse, when her husband convinces her to become a contract killer for the government, but when the cartel brutally takes his life, and kidnaps her children, she embarks on a fierce and relentless vigilante mission to rescue her kids, at any cost.

SYNOPSIS

Aimee is a fiery young woman, living in a Filipino shantytown, surrounded by her loving husband and two precious children. But her community, plagued by poverty and overrun by the dangerous drug Shabu, breaks her heart daily with its destruction. The violence and crime that consumes her neighborhood is a constant thorn in her side, fueling a burning anger within her that threatens to consume her.

Her husband, Jeff Ryan, a retired American soldier, supports his family by working as a contract killer, taking out drug dealers on behalf of the government. But when a hit comes in that requires a woman's touch, Jeff turns to the one woman he trusts above all others - his wife, Aimee. Disgusted by the atrocities she's witnessed in her community, Aimee agrees to take on the hit.

But after successfully completing the job, Aimee can't shake the feeling that she's meant for more. Determined to make her community a safer place for her children to grow up in, she takes out a ruthless drug dealer preying on her helpless neighbor. But this unsanctioned hit brings the wrath of a powerful criminal organization down on her family, and Aimee must fight for their survival in what will prove to be the fight of her life.



MAIN PROTAGONISTS

AIMEE RYAN

Represents the quintessential mother, struggling to care for her family. She will stop at nothing to provide for her family, but how far is too far?

Character arc: Begins as a fragile mother, and ends as an assertive vigilante.

Description: Petite, large almond eyes, her worn appearance and shy demeanor can't hide her natural beauty.

A respectable woman, and caring mother, Aimee never envisioned herself having to commit a murder to keep a roof over her family's heads, but once she felt the rush of her first kill, she allowed the excitement to push her too far, putting her own family in the crosshairs, and now she has to enact vengeance for her dead husband, and rescue her children.

*The main character's final demise can be spun off into a series, and also a dark comic, which features Aimee as a crime fighting, vigilante hit-woman.

JEFF RYAN

Represents the idea of a man who desires to escape his past, but the consequences of the choices that he made follow him, and ultimately end up costing him his family, and his life.

He is the stereotypical "hard as a rock" military man, but to his family, he is a huggable teddy bear.

His greatest attribute is his unwavering dedication to his family.

Description: All American, unique features, everything about him screams military.

After the war, there was nothing for him in the States, so he moved to The Philippines to escape his past, and start over.

When he met his wife, and started a family, he thought that life was finally going to be normal, but how normal can life be, when you're literally killing to make a living?

MAIN ANTAGONISTS

SHABU

BAYANI

Represents the idea of the person who is oblivious to the consequences of their behavior, until someone they care for dies, at which point, it dawns on them that they are, in fact, a bad person.

He's an egotistical narcissist, who doesn't think about the repercussions of his actions, until it's too late.

His greatest attribute is the position of power that he is in, as a police officer.

Description: Distinguished, intimidating, sly, with Cowboy style.

He had dreams of being a legend, for as long as he could remember. His drive, and ruthless tactics, propelled him to the top of his field. He chose the police force, because he thought that he could change the world for the better, but once he tasted power, his ambitions changed. When the opportunity to further his ambitions came in the form of a powerful criminal organization, he didn't think twice about buying in.



CAMCAM

Represents the ithe tyranny of man, Hell bent on controlling his world.

He's a cold-blooded killer, head of his organization, with no moral compass, and only domination and riches on his mind.

His greatest attribute is his ruthless mentality, and the empire he controls.

Description: Murderous-eyes, shifty grin, lanky build. The boy who was picked on as a kid, but found a gun, and the power it brought.

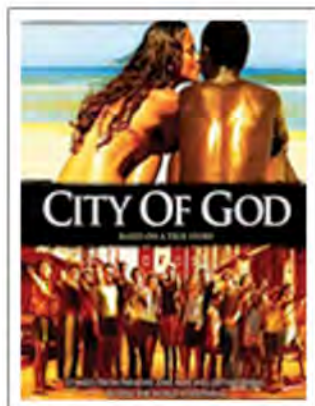
Underneath his hip-hop persona, and without his gun, he would just be another scrawny punk, running the streets, but years of putting his life on the line, in the pursuit of being recognized as the dangerous thug, has hardened him into a man to genuinely fear.





KILL BILL (2003)

Domestic \$70,099,045
Foreign \$110,850,000
Worldwide \$180,949,045
Budget \$30,000,000



CITY OF GOD (2002)

Domestic \$7,564,459
Foreign \$23,077,311
Worldwide \$30,641,770
Budget \$3,300,000



MAN ON FIRE (2004)

Domestic \$77,911,774
Foreign \$52,381,940
Worldwide \$130,293,714
Budget \$70,000,000



DEATH WISH (1974)

Domestic: \$22,000,000
Foreign \$N/A
Worldwide: \$N/A
Budget \$3,000,000



SHABU

The films visuals will show a unique insight into the juxtaposition between the beauty of a vacation destination like the Philippines, and the reality of living there, as we expose to the underbelly of its society.

CAUTION • CAUTION • CAUTION • CAUTION • CAUTION • CAUTION • CAUTION



SHABU



Creator
JUDAH RAY

judahray@alevelpictures.com

