

DO YOU KNOW YOUR NAME



DO YOU KNOW YOUR NAME

HUMANIMAL MYTHOLOGY

An apocalyptic virus has de-evolved mankind and has practically decimated humanity.

The virus destroys human traits, like the ability to walk upright, speak and write, even use tools. The basic things that set humans apart from animals; it takes them all away and leaves behind only what it deems relevant: basic survival skills.

The first thing to go is your memory. You forget the simplest things... like your own name.

LOGLINE

In the aftermath of a global virus outbreak, Lilly becomes convinced by Adam that they have been brought together by a divine power with the purpose of repopulating the world, but when Nia arrives, the Humanimals that stalk them are the least of their worries.

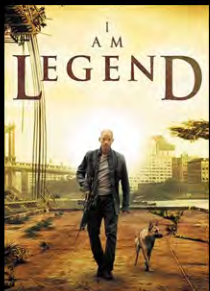
SUMMARY

As the world descends into chaos, Lilly, a young, blind lesbian, is left stranded in a desolate area, until she's discovered by Adam, a seemingly calm and collected man's man, who sees her as a potential mate in the aftermath of the apocalypse. However, Lilly is not interested in Adam, but he has her convinced they are the sole survivors of the apocalypse. She's about to give in until she forms a bond with Nia, a strong-willed and independent woman who arrives at their camp. Nia's friendship helps Lilly embrace her own independence and exposes Adam's true intentions. As his grip on Lilly begins to slip, Adam becomes increasingly unhinged, driven by his belief that he and Lilly are meant to repopulate the earth. In his relentless pursuit of what he sees as God's will, Adam pushes Lilly away and forces Nia to help her escape his evident insanity. All the while, the group must also contend with the threat of Humanimals stalking their camp, bringing their survival into even greater doubt.

SET AGAINST A BEAUTIFUL DESERT BACKDROP



I AM LEGEND MEETS 10 CLOVERFIELD LANE MEETS BUG



DO YOU KNOW YOUR NAME



DO YOU KNOW YOUR NAME

CHARACTERS

Featuring a diverse cast representing strong, female protagonists, the visually impaired, American military, and the LGBTQ+ community



LILLY Protagonist

REPRESENTS: **UNREALIZED FEMALE POWER, ALONG WITH THE UNTAPPED RESOURCE SOME SEE AS A DISADVANTAGE**

ARC: **SHE WAS RAISED WITH A VISUAL IMPAIRMENT IN A PRIVILEGED HOUSEHOLD, BUT IS THROWN INTO CHAOS WHEN A VIRUS INFECTS HER FATHER, WHICH LEAVES HER ALONE IN A DYSTOPIAN WORLD.**

Lilly, who grew up with a visual impairment and in an upper-class lifestyle with constant care, finds her world turned upside down when a virus infects her father, who leaves her stranded in a desolate world. She is found by Adam, who she believes has her best interests at heart, but who actually has his own ulterior agenda. Adam convinces Lilly to go against her own desires and attempt to repopulate the earth in order to save humanity from extinction. However, when Nia arrives and introduces Lilly to the idea of self-reliance, Lilly begins to see Adam for who he truly is. Through her newfound independence, Lilly discovers that she is stronger than she ever realized and is able to stand up to Adam when the situation becomes dire.



ADAM Antagonist

REPRESENTS: **OVERBEARING MASCULINITY, ALONG WITH RELIGIOUS FANATICISM**

ARC: **HE PRESENTS HIMSELF AS A CALM AND RELIABLE PROVIDER, BUT LATER REVEALS HIMSELF TO BE A MANIPULATIVE AND DANGEROUS AGGRESSOR, THREATENING LILLY AND NIA'S LIVES AS HE TRIES TO GAIN CONTROL.**

Adam is a self-sufficient man who lives off the grid and has poor social skills. When he leaves his remote encampment to gather supplies, he is unaware that the world has changed. He comes across Lilly, a helpless young woman, and initially sees her as a resource rather than a person. However, as a religious man, Adam also realizes that Lilly, as a young and fertile female, could be useful in his goal to repopulate the earth. Despite his less-than-noble motivations, Adam decides to tolerate Lilly's presence. Everything changes when Nia arrives and, in Adam's eyes, threatens the future of humanity by challenging his control over Lilly and his plans for the future.



NIA Supporting

REPRESENTS: **THE INDEPENDENT FEMALE MINDSET, ALONG WITH FREEDOM OF EXPRESSION**

ARC: **SHE VALUES SELF-RELIANCE AND IS COMFORTABLE WITH BEING ALONE, BUT UNEXPECTEDLY DEVELOPS A FRIENDSHIP WITH LILLY AND DISCOVERS THAT SHE ENJOYS THE SENSE OF COMPANIONSHIP AND SOLIDARITY THAT THEIR RELATIONSHIP BRINGS.**

Nia has always been a solitary individual, with a strong environmentalist streak and a tendency to avoid social interactions. The collapse of society only reinforces her introverted lifestyle. However, Nia's solitude is disrupted when she stumbles upon Lilly and becomes suspicious of Adam's intentions towards her. Nia is drawn to Lilly and feels a desire to help her realize her full potential. As Nia grows closer to Lilly and becomes increasingly wary of Adam, she decides to stay and try to protect Lilly from Adam's escalating behavior. When the situation reaches a breaking point, Nia takes matters into her own hands and helps Lilly escape from her perilous situation.



DO YOU KNOW YOUR NAME

STORY

PLOT

When Adam tries to convince Lilly that they must repopulate the world in the aftermath of a global disaster, she initially believes him. However, Nia arrives and helps Lilly see the truth of the situation, revealing Adam's cold and manipulative nature. Nia risks her own life to stay and try to convince Lilly to leave, but by the time she succeeds, it is almost too late. Lilly and Nia are forced to go on the run from Adam, who uses every advantage at his disposal to try and catch them in a heart-pounding cat-and-mouse chase.

SUBPLOT

As the city descends into chaos, Lilly's father rushes to drive her to safety. However, the infection overtakes him and he crashes their car during their escape, which left Lilly stranded and alone. Fearing for his daughter's safety and uncertain of his own actions, he watches from afar, protecting her from other Manimals that may threaten her wellbeing.

ARCS

The story begins with Adam, a calm and dominant man, helping the meek and visually impaired Lilly to survive in a post-apocalyptic world. Nia initially refuses to stay, but ultimately decides to out of concern for Lilly. As they become friends, Lilly discovers her own strength and independence, casting aside her walking stick and learning to forge her own path. Nia also forms a bond with Lilly and finds a friend. However, as they grow closer, they begin to see Adam's true colors and he becomes increasingly controlling and aggressive. The characters are forced to confront issues of religion, gender, and sexuality as they struggle to adapt and survive in this harsh world. Ultimately, they must decide whether to evolve and change or get left behind, and they find that the key to survival is to overcome their perceived shortcomings and find common ground.

THEMES

LOVE · DOMINANCE · MANIPULATION · FEMALE COMRADERY · SELF DISCOVERY AND RELIANCE

POST-APOCALYPTIC VIRUS OUTBREAK



28 DAYS LATER
Budget \$8M
Gross \$84M

POST-APOCALYPTIC VIRUS OUTBREAK



10 CLOVERFIELD LANE
Budget \$14M
Gross \$110M

MAN TERRORIZES WOMEN IN A CONTAINED SPACE



BUG
Budget \$4M
Gross \$8M

LGBTQ+ HORROR / THRILLER



JENNIFER'S BODY
Budget \$16M
Gross \$31M

LGBTQ+ HORROR / THRILLER



HIGH TENSION
Budget \$2.5M
Gross \$6M

HORROR WITH BLIND LEAD



BLINDNESS
Budget \$16M
Gross \$44M

DO YOU KNOW YOUR NAME
COMPAIRABLES



DO YOU KNOW YOUR NAME

FOR MORE INFORMATION:
JUDAH RAY
judahray@alevelpictures.com

LEGAL:
WILLIAM A. JACOBSON
GOODMAN, GENOW, SCHENKMAN, SMELKINSON, & CHRISTOPHER
310.385.9300 phone
310.385.9333 fax
waj@bhdl.com